



ACCOMODATIONS INFORMATIONS

In a unique environment & and closed to Paris, Maisons-Laffitte is famous for its castle (perfect illustration of French classical architecture of the 17th century) and its race courses (longest straight track of Europe).

1/ Accommodations :

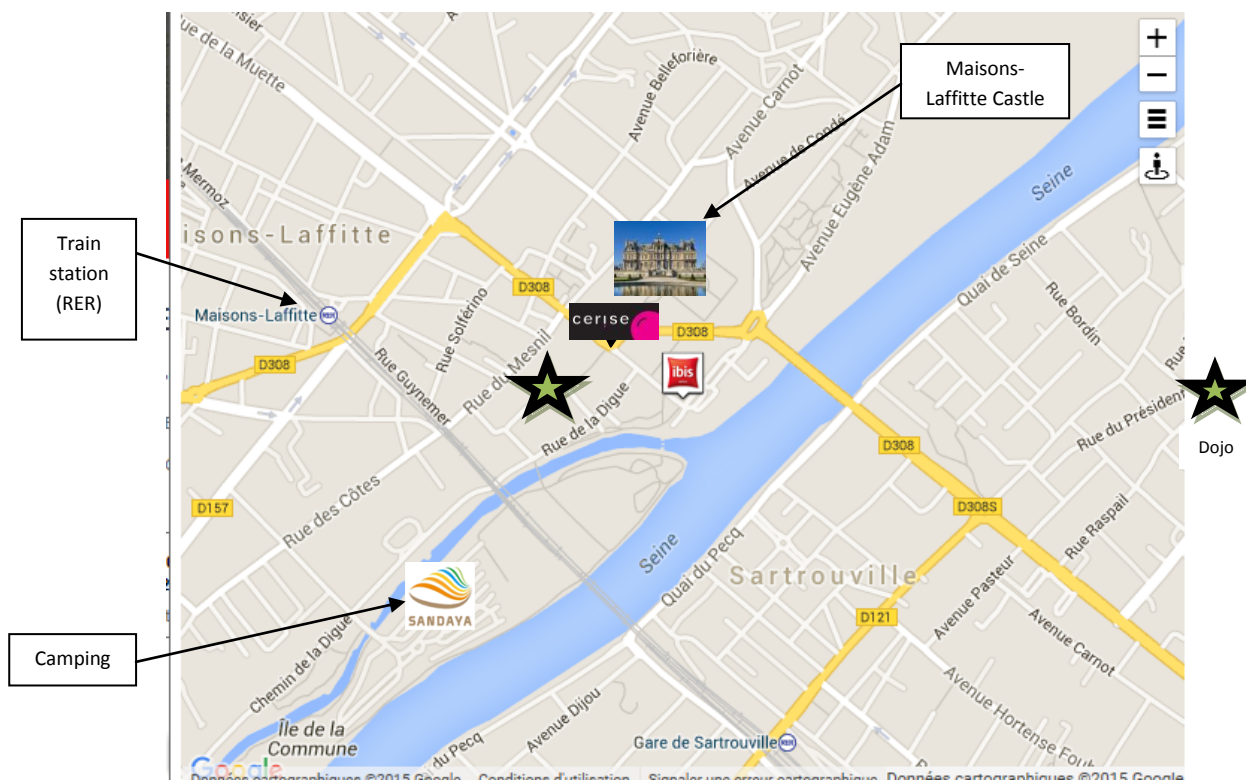
We can propose you 2 hotels (IBIS or CERISE) & 1 camping 4* in Maisons-Laffitte, closed to the Gymnasium/Dojo (5 minutes by walk).

If you prefer staying in Paris Center, it's up to you !

Maisons-Laffitte is only 20 min by train "RER A" from Paris – Charles de Gaulle Etoile (at Champs-Elysée street).

You will find a lot of hotels there too but probably a little more expensive than in Maisons-Laffitte...

In any case, please book as soon as possible to be sure to have available rooms.



IBIS HOTEL



2 Rue de Paris
78600 Maisons-Laffitte
Phone : + 33 1 39 12 20 20
<http://www.ibis.com/fr/hotel-3437-ibis-maisons-laffitte/index.shtml#>

Room for 2 persons (72 € / night including 2 breakfasts) = 26 € / person /night without breakfast)

For information, Hotel IBIS proposes you :

- 5 rooms for 3 persons (1 double bed + 1 single bed)
- 18 twin rooms (2 separated single beds)
- 37 double rooms (1 double bed)

Facilities : Air conditioning, Internet access (Wifi), TV (Flat screen), Hair dryer, Razor plug, Telephone, Room cleaning, Sheets and Towels.

**A payment of a deposit equivalent to 50% of the total at the latest February 29th.
Cancellation possible until April 6th, beyond the down payment is due.**

CERISE HOTEL



16-18 Rue de Paris
78600 Maisons-Laffitte
Phone : +33 1 39 62 11 91
<https://www.cerise-hotels-residences.com/fr/hotels-et-residences/details/paris-maisons-laffitte>

**Studio with kitchen for 2 persons (74 € / night including 2 breakfasts) = 54 € / person /night without breakfast)
Studio with kitchen for 4 persons (140€ / night including 4 breakfasts) = 25 € / person / night without breakfast)**

For information, Hotel CERISE proposes you :

- 20 studios for 2 persons (twin beds)
- 20 studios for 2 persons (double bed)
- 5 studios for 4 persons (1 double bed + 2 twin beds)

9th EUROPEAN CHAMPIONSHIP SPORTS CHANBARA – PARIS 2016

Apartment facilities : Air conditioning, Internet access (Wifi), Soundproofing, TV (Flat screen), Hair dryer, Razor plug, Telephone, Microwave, Cutlery, Tea & coffee kit (Courtesy platter), Room cleaning, Sheets and Towels.

A payment of a deposit equivalent to 50% of the total at the latest February 29th.
Cancellation possible until April 6th, beyond the down payment is due.

Camping International de Maisons-Laffitte



Category 4 *

1 rue Johnson

tel. +33 1 39 12 21 91

Fax +33 1 39 12 70 50

contact : ci.mlaffitte@wanadoo.fr

Internet : <http://www.sandaya.fr/Camping/France/Paris/Maisons-Laffitte/>



Brochure MAISONS
LAFFITTE 2016.pdf

Services and facilities on-site:

General:

Bar-Restaurant, Shop, Laundry, Television, Wi-Fi, Service station for campervans (free for registered campers), Overnight parking

Services specific to Mobile Homes:

Linen rental (€10/set) Housekeeping (€50/m-home) Baby kit (high-chair, bath, bed) (€4,5/day)

Mobile home equipped for people with reduced mobility

RENTALS & ACCOMMODATIONS (Mobile Homes or Room)	RATES BY NIGHTS (max)
COTTAGE 4/5 persons – 2 rooms – 27 m ²	103 €
C. PREMIUM 6 persons – 3 rooms – 29 m ² with Terrace, TV, Dish Washer, Sheets & Towels	137 €

To have the group reduction price, only French Federation of Judo/Sports Chanbara can book all cottages.

According number of cottage booked, the camping will make some reduction price.

Today, only 2 C. PREMIUM & 5 COTTAGE remain available.

CAMPING PITCHES (with your own campingcar or own tent to install)	RATES BY NIGHTS
CONFORT PLUS RIVERSIDE PITCH (include installation, electricity 16A and water access on the pitch)	39 €
CLASSIC PITCH (include installation & electricity 10A)	29 €
Extra person of +7 years old	7 €
Extra person from 3 to 7 years old	3 €
Child under 3	Free

2/ Transport from airport to Maisons-Laffitte

To come in Paris, you have choice with 3 airports :

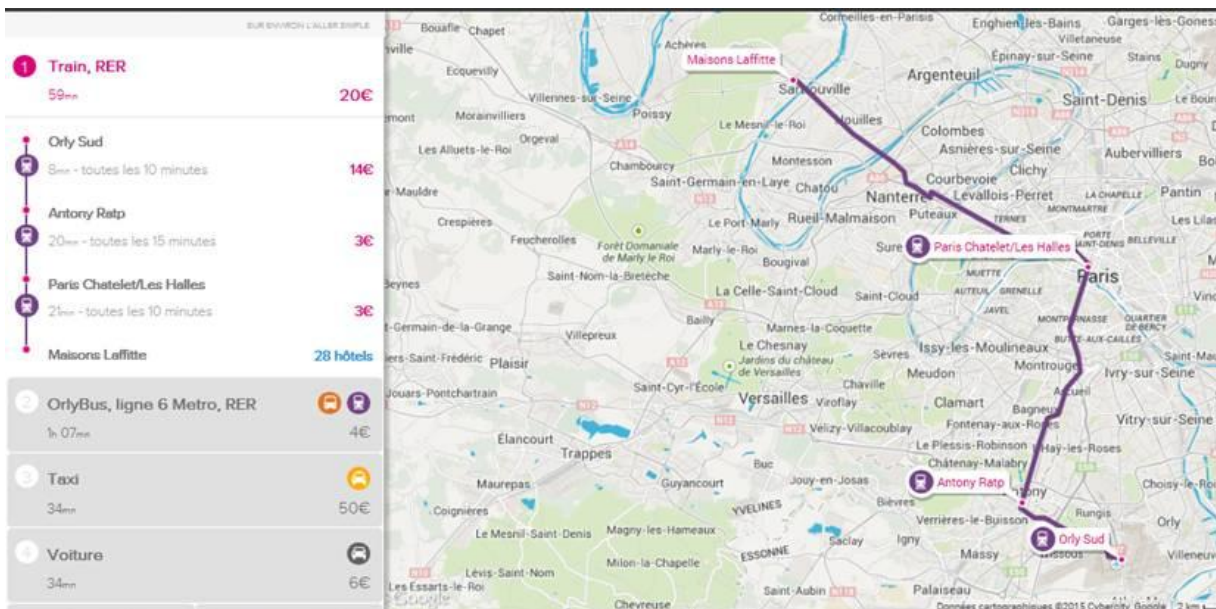
- Orly
- Roissy Charles de Gaulle
- Beauvais (low costs only)

a/ By train

From ORLY Airport to Maisons-Laffitte Station

20€ / person : 1h

Take the train called “OrlyVal” (fast service of automated metro) until Antony Station, then take train “RER B” (direction Paris) until Châtelet station and take train “RER A” (direction Poissy-Cergy) until Maisons-Laffitte station



From ROISSY CHARLES DE GAULLE Airport to Maisons-Laffitte Station

20€ / person : 1h20

Take the train “RER B” (direction Paris) until Châtelet station and take train “RER A” (direction Poissy-Cergy) until Maisons-Laffitte station



From BEAUVAIS Airport to Maisons-Laffitte

There is no train available, only bus.

For information, you will find here the Subway map of Paris & areas :

<http://www.ratp.fr/plan-interactif/>

b/ By bus

Each airport proposes Bus to go to Center of Paris.

Then, you need to take subway and/or train "RER A" (direction Poissy-Cergy) to go to Maisons-Laffitte station (so consider 4€/person to add to following prices).

From ORLY airport to Paris - Denfert-Rochereau station : OrlyBus

Price: ONE WAY per person: €11

From CHARLES DE GAULLE airport to Paris – Opéra : RoissyBus

Price: ONE WAY per person: €11

From BEAUVAIS airport to Paris - Porte Maillot :

Price: ONE WAY per person: €17 at the BUS TICKETS SALE POINT / €15.90 ON LINE

If several countries arrive at same time at same airport, we can eventually try to organize to pick you up by private bus. In this case, thanks to inform us very quickly about your flights schedules. We will give you a feedback about feasibility & added costs.

Don't forget to indicate us your flights schedules in order to welcome you at your arrival in Maisons-Laffitte !

3/ Lunch & Dinner

On Friday 6th evening, all country's representatives (2 or 3 persons max per country) are invited by the Mayor of Maisons-Laffitte in the City Hall for the Welcome Party.

Competitors, referees and supporters will be able to enjoy dinner at the hotel or other restaurants in the city. Maisons-Laffitte counts several restaurants & bars closed to the hotel.

It will be the same on Saturday evening.

Saturday & Sunday lunch will be included in the competition fees.

If you have food allergies or prohibited, thanks to inform organization in the spreadsheet that you need to send back to confirm number of person.

Sayonara Party on Sunday evening will be included in the competition fees.

4 / Fees

Competition fees are = 100 € / adult 70 € / child 80 € / supporter

They include :

- Welcome Party & Dinners at Hotel IBIS or CERISE on Friday 6th & Saturday 7th
- Lunches on Saturday 7th & Sunday 8th

9th EUROPEAN CHAMPIONSHIP SPORTS CHANBARA – PARIS 2016

- Sayonara Party on Sunday 8th (diner & drinks)
- Competitions fees

They will not include :

- transport until Maisons-Laffitte (flight, train, taxi)
- accommodations
- extra drinks (except at the Sayonara Party)

5/ Payment

Accommodations deposit should be paid before February 29th directly to the hotel you chose (please contact them directly) or via French Federation of Judo/Sports Chanbara who can centralize all bookings.

Competitions fees should be paid at the latest on May 7th to French Federation of Judo /Sports Chanbara.

We invite you to pay both by transfer bank in Euros at French Federation of Judo/Sports Chanbara. You can pay both at the same time if it's easier for you too.

You will find following bank coordinates of French Federation of Judo/Sports Chanbara :

RELEVÉ D'IDENTITÉ BANCAIRE				
Identifiant national de compte bancaire - RIB				
Banque	Guichet	N° compte	Clé	Domiciliation
10278	06039	00020849141	01	CCM PARIS MONTMARTRE GB
Identifiant international de compte bancaire				
- IBAN (International Bank Account Number)			BIC (Bank Identifier Code)	
FR7610278060390002084914101			CMCIFR2A	
Domiciliation		Titulaire du compte (Account Owner)		
CCM PARIS MONTMARTRE GB		FEDERATION FRANCAISE DE JUDO		
47 RUE LA FAYETTE		ET DISCIPLINES ASSOCIEES		
75009 PARIS		21 AV DE LA PORTE DE CHATILLON		
Tél: 08 20 09 99 99		75014 PARIS		

You will be able to pay the rest of accommodations directly to the hotel when you arrive if it's not already done by transfer bank.

If you prefer paying competitions fees in cash (Euro only), thanks to have the right account and to give it to Celine. But one more time, we encourage you to pay by transfer bank.

In order to facilitate the organization of the week-end, don't forget to send back all fulfilled documents attached (Applications.xls) ; you will find in the same file one sheet for each item :

- **Accommodations : number & kind of room**
- **Lunch & Diner : number of persons & if there is food allergy**
- **Your flights schedule : to welcome you**
- **Competition registrations (1 sheet by age category)**

9th EUROPEAN CHAMPIONSHIP SPORTS CHANBARA – PARIS 2016

May is a busy month in terms of events in Paris & areas. Hotels should be quickly full. Camping has already limited availabilities.

So, please book as soon as possible.

It will be very helpful too for our own organization to know in January the estimated number of person by country who will join the big European event.

For further information, please contact us by email at 9theurochampionship@gmail.com or by phone at Celine's number : [+33 6 62 06 38 30](tel:+33662063830)